

AVA SOFIA FOUNDATION
DBA

AUTISM MOMS OF KONA

SCOPE OF BUSINESS



Created By :
Jessica Mccullum, Founder and COO



WE are Special Needs.

We are Autism Moms of Kona, a Nonprofit Corporation that provides support services and special events for families with disabilities. Our motto is WE are Special Needs, and we strive to support the whole family as such through additional therapies, respite, and support groups. In addition, we look to create awareness and acceptance for Autism in our community so that families can better understand their child's disability prior to or upon diagnosis.

We have been established as a community group since 2018 and have just recently applied for the 501(c)3 tax exempt status for our nonprofit aegis, the Ava Sofia Foundation (in honor of my 9 year old autistic daughter).

Reasons for our DBA



Future Growth in
other Markets



Broad Scope of
Work relating to
Autism



Quick Traction for
growth in Current
Market

Problem

19% of adults in Hawaii have a disability (CDC 2021). Hawaii County has the highest rate in the state for children with a disability at 4.1% (Hawaii Health Matters, 2016-2020).

Many people in the community don't know what Autism looks like and how to support their loved ones with disabilities.

Autism Moms of Kona encourages an Inclusive environment that allows families with special needs to integrate in the community in a comfortable and supportive setting specifically designed to accommodate their need for substantial support. The community can come to participate and learn how Autism is presented in individuals, educating both businesses and community members on how to best support families with special needs. This is also a safe environment for parents and caregivers to ask questions if they suspect early signs of Autism in their children.



3 Categories

Our vision is "WE are Special Needs," targeting a support system for the entire family nurturing a disabled member on the spectrum.

Our mission is much more Critical and focuses on **INTEGRATION** - fostering an environment where special needs families are not judged in public, and furthermore where they are supported by others so that they find the courage to move out of *isolation*.



Awareness is not enough. Acceptance is our goal.

1

Public Community Events

Known as our "Autism Acceptance Program", we structure public facing activities and events that foster an inclusive and integrative opportunity for people to learn more about the Autism spectrum.

2

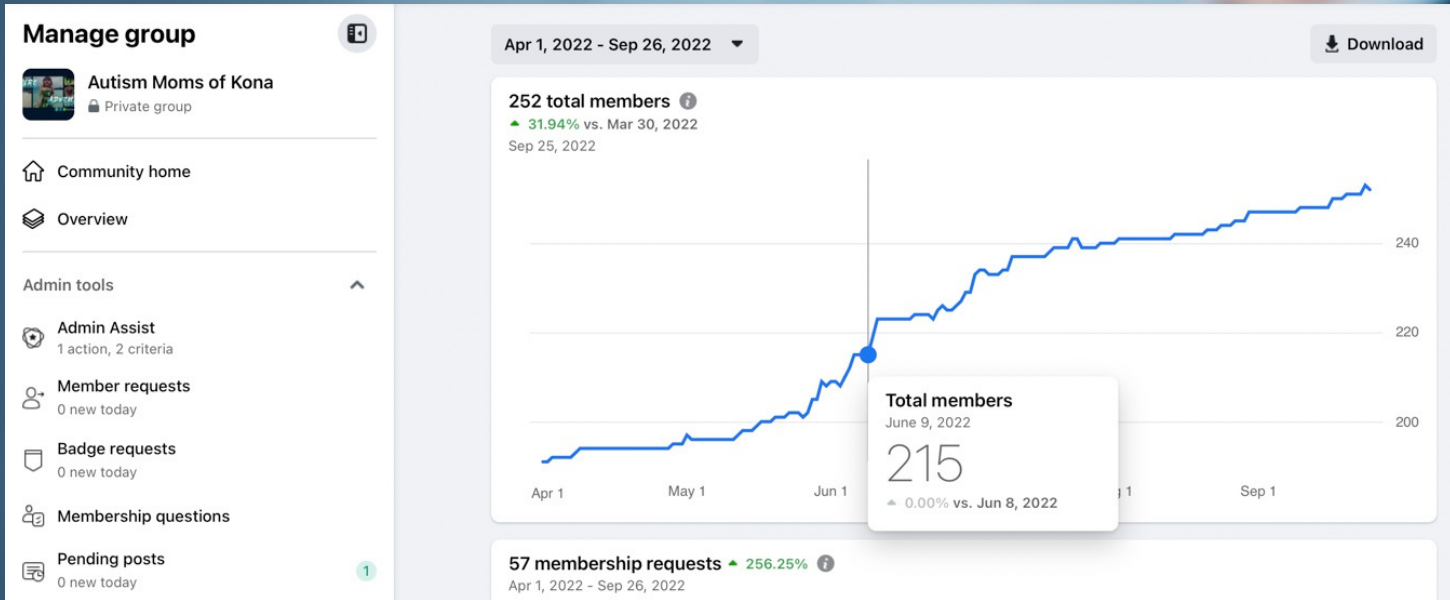
Private Inclusive Lessons

Families are given opportunities to "try out" a certain type of activity to see if the therapeutic opportunities align with the children and their specific need for support in certain areas of the Autism Spectrum. Examples of these are Paddleboarding Lessons, Swim Lessons, Interactive Yoga Therapy, Therapeutic Horticulture, Occupational Therapy Clinic Days.

3

Private Support Groups

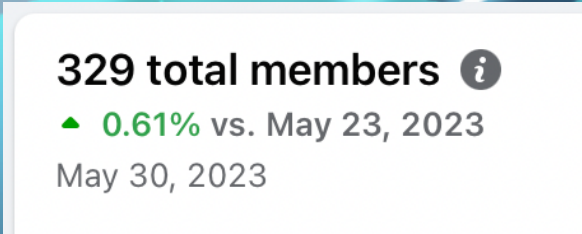
We foster a nurturing and confidential environment for families, creating a hub to connect families with resources, i.e. IEP advocates, Service Dog trainers, Occupational Therapists, Nutritionists, etc. who offer solutions on how to directly support behavioral and parenting challenges.



Current Traction

All Organic Growth
 NO Print materials, Marketing or Advertising

The NEED is there.



Our Programs



Learning the Brushing OT Protocol, Support Group



Movie Night Under the Stars 7/30

Private Support Groups and Private Group Events

To create a hub to connect families with resources:

- i.e. IEP advocates
- Service Dog trainers
- Occupational Therapists
- Nutritionists, etc.

A lot of families tend to hide their children's shortcomings because they are confused, or feel responsible for the disorder, or they are just too overwhelmed with the additional care and attention required and it's not clear where to start, what questions to ask, or how to best support their kids.

We foster a nurturing and confidential environment for families in many different types of settings while selecting public speakers to share some guidance on how to directly support behavioral and parenting challenges.

The CEO and the COO work with the Inbound Family Representative to conduct these activities.

Our Programs



Interactive Yoga Therapy 9/25



Standup Paddle Ocean Therapy 8/28

Private Inclusive Lessons

Monthly Inclusive Therapies are also provided for the children with disabilities and their siblings to allow families to “try out” a certain type of alternative therapy to see if the therapeutic opportunities align with the children and their specific need for support in certain areas of the Autism Spectrum. Examples of these are:

- Paddleboarding Lessons
- Swim Lessons
- Interactive Yoga Therapy
- Therapeutic Horticulture
- Occupational Therapy Clinic Days, etc.

The COO and team of Event Coordinators works with a group of volunteer and we partner with providers/small business which provide their services that are slightly altered to accommodate special needs, thus also involving them as an “Inclusive Partner” as they learn how to better accommodate special needs in their general business strategy. It provides resources and therapeutic relief for the disabled and their families.

Our Programs



Inclusive Partnership Plaque we present to our affiliates



First Responder Training (sample)

Inclusive Partnership Program

Also known as the Sensory-Friendly Businesses Program we work within the community to encourage acceptance with local businesses, establish sensory-friendly settings such as movies where they turn down the volume, turn up the lights, and establish an understanding that our special needs attendees can get a bit loud and be inattentive and may disrupt an audience.

This can be appropriate for movie theater settings, plays, or even other things such as a circus where crowds present a huge issue for individuals with sensory issues. Think of it like the “Kupuna hour” we established during COVID for high risk individuals, where crowds were controlled and settings and safety parameters were set for our sensitive loved ones.

It helps our special needs community to feel included and accepted, and encourages them to avoid hiding and isolation. It also involves presenting to our first responders and other business professionals that need to know how to interact with autistic individuals in the event of an emergency. The COO, the CEO, and the Local Business Relationship Specialist will run this program.

Our Programs



Mariah and Maritza (BCBA) in session with Ava



Another session conducted during our Autism walk, working on community integration and sensory regulation

Incentive Training Program

To educate promising candidates and to attract and guide them through a career path with ABA therapies as an entry-level RBT. There is a massive shortage of therapists on the Big Island and they cannot meet the growing demand of our special needs community.

We will provide individual grants known as Therapeutic Recruitment Sponsorships to help facilitate the awareness of a career path within the Autism field and associated ABA, Occupational, Speech, and Physical Therapies. Recipients will be selected based on an application which will verify paid receipts for their educational materials and examinations, background checks, licensures and certifications, and other such verifications required by established medical providers to be able to provide therapeutic services in home to families. The recipients will also have completed a Competency Assessment and will have conducted in-person training in the field, solidifying their ongoing commitment to the job role. The Ava Sofia Foundation will conduct initial, periodic, and final reports on the start, progress, and completion of a therapist certification, and the initial report will state a specific timeframe with which the entire licensure will be completed.

Our Programs



Autism Walk - King Kamehameha Day Parade 6/10



Annual Sensory Festival Fundraiser 2019

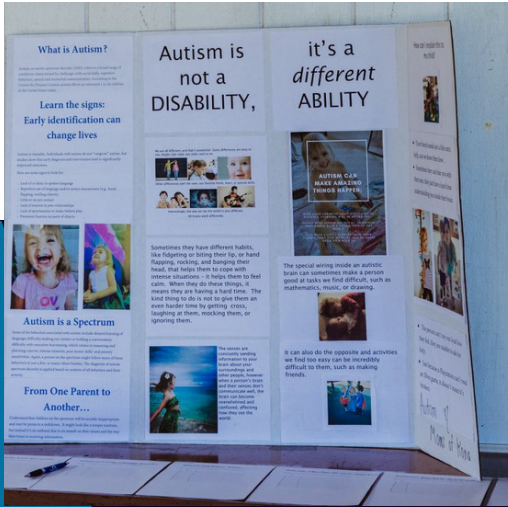
Autism Acceptance Program (Community Events)

Fostering an inclusive environment within the general public to encourage awareness and acceptance in the community, so that parents can identify potential early signs of Autism so that early intervention and support can begin at a young age when their brains are more pliable and receptive to treatment.

Awareness is to also emphasize that inclusive environment, because children are our strongest leaders. If they understand that their peers need support, and their parents know how to have those conversations with their neurotypical children and know how to answer their questions, then they can become enthusiastic about helping their peers in and out of classroom settings. In my experience, my daughter has received some of the best interventions from her peers at a very young age. These activities occur quarterly and given the opportunity from the community, such as Holiday Parades and Community Popup events, local pageants, etc.

The COO and the Event Coordination team will work in coordination with other community resources hosting community events so that we may participate.

Our Programs



Materials explaining the Spectrum

Early Identification Resources

This program is geared toward continual research to understand better the most up-to-date materials to support an Autism Spectrum diagnosis among other mental health comorbidities.

Print and electronic media and materials will be drafted and distributed, along with online panel discussions, guest speaking opportunities, and private sessions - all resources intended to educate parents who question whether or not their child might be on the Autism Spectrum. It's important to foster a highly confidential and safe environment for these parents to explore at their own emotional pace so they are not resistant to seeking assistance and support for their children and their family at a very early stage of the child's life, OR for a mild case of ASD which may need a lesser level of support.

This program is conducted remotely with the COO and the Inbound Family Representative working directly with families and medical providers.



Annual Sensory Festival Fundraiser 2019

Our Programs



IEP Advocacy Partner

Advocacy Support

This program is geared toward supporting and connecting parents and families with advocates that can help to represent them in IEP meetings (Individualized Educational Programs within the Department of Education) and Medical Insurance Appeal Processes, among other circumstances which families might need representation relating to a violation of the Equal Rights Amendment of the US Constitution. We partner with other charities to accomplish a thorough job depending on availability and the specifics of each case.

The CEO and the COO will work with the Inbound Family Representative to be present in meetings to advocate for those who may not know their rights are being violated.



Advocating in an IEP meeting

Our Programs



Deep Cleaning Services

Respite Program

This program has the biggest impact on the well-being of our families. We offer each family a list of Respite options ranging from a Deep Cleaning to a Nanny in the home, to a free Therapy or therapeutic alternative. The family gets to choose what respite options serves the needs of the family unit at that given time, and we set the intention to provide this on a quarterly basis if not more as our funding allows. Typically those who opt for basic needs to care in the home flag our staff to pay extra care to their higher levels of stress and inability to cope with maintaining a healthy lifestyle.

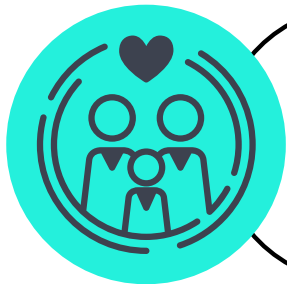
The COO will work with the Inbound Family Representative and the Respite Package Coordinator to conduct quarterly intakes to assess the current stability of the family unit and their overall need for support.



REQUEST A PRIVATE NANNY

Assistance with Specialized Caregivers

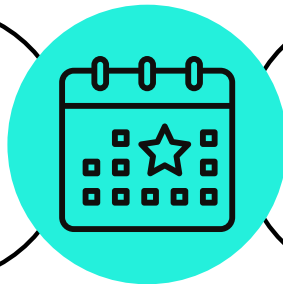
Startup Job Roles



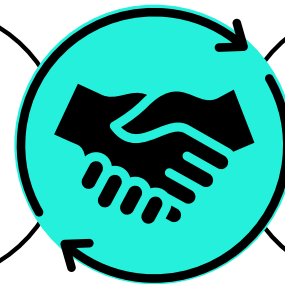
**(1) Inbound
Family
Representative**



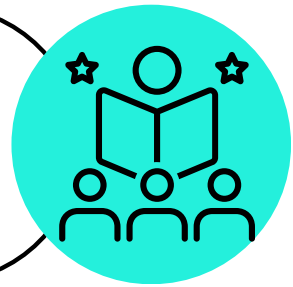
**(1) Respite
Package
Coordinator**



**(2) Event
Coordinators**



**(1) Local Business
Relationship
Specialist**



**(1) ABA
Recruiter**

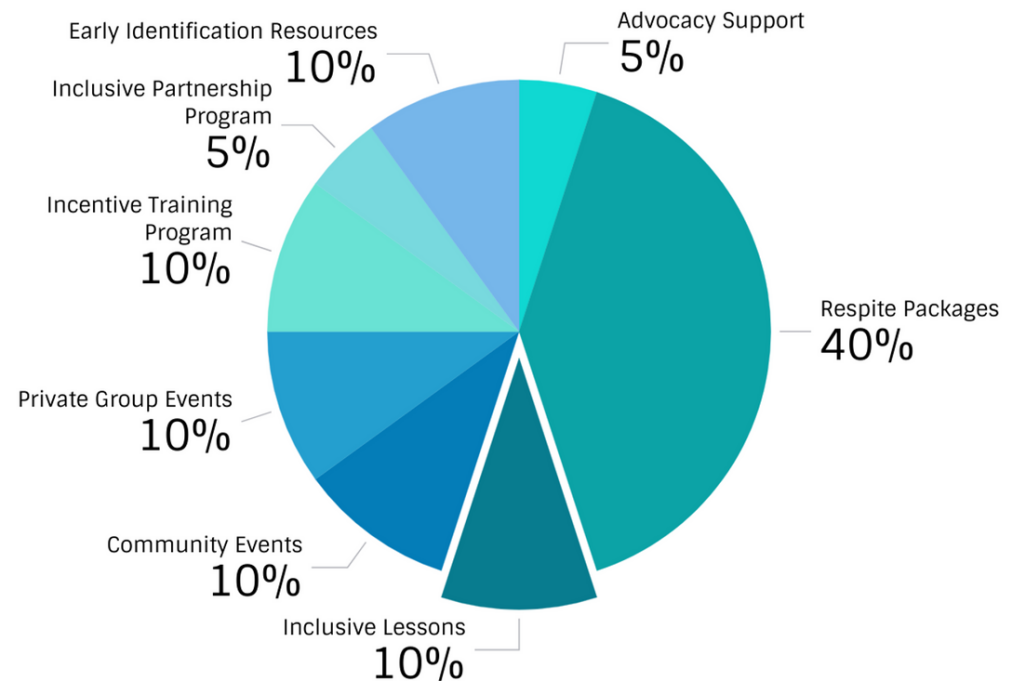
Budget

Transparency is

KEY

I want to be as transparent as possible with the community and our donors to reflect our efforts to keep our Program Ratio to 80% or more, while also deferring to professionals for legal, tax, and professional development purposes. This accounting will be available on our website as an infographic.

Autism Moms of Kona - Program Expenses



Priority Ranking - (1) Private Group Events, (2) Inclusive Lessons, (3) Community Events, (4) Inclusive Partnership Program, (5) Incentive Training Program, (6) Respite Packages, (7) Community Events, (8) Early Identification Resources, (9) Advocacy Support

Upcoming Events



**Snorkeling Activity with
Deep & Beyond
6/9**



**Autism Walk
King Kamehameha Day
Parade 6/10**



**Sensory-Friendly Showing -
The Little Mermaid
6/13**



**Dads' TownHall Meeting
Father's Day Event
6/15**



**"Tea Time" Support Group
with Keiki OT Therapy
6/16**



**Horse Therapy with
Therapeutic Horsemanship
6/24**



**Sensory-Friendly Showing -
Elementals
6/27**



**3rd Annual Sensory Festival
Fundraiser
7/16**



CONTACT US



+1 (808) 937-9008



www.AutismMomsofKona.com



AvaSofiaFoundation@gmail.com



75-5788 Niau PI
Kailua Kona, HI 96740

